



eCATALOGsolutions/print
The print catalog becomes digital

eCATALOG
SOLUTIONS

DER ELEKTRONISCHE PRODUKTKATALOG

WEIT MEHR ALS NUR CAD MODELLE



About us:

Hansjörg B. Gutensohn
CEO
asim GmbH



Andreas Höfig





A powerful team

eCATALOG
SOLUTIONS

ECATALOGSOLUTIONS –
WEIT MEHR ALS NUR
3D CAD MODELLE



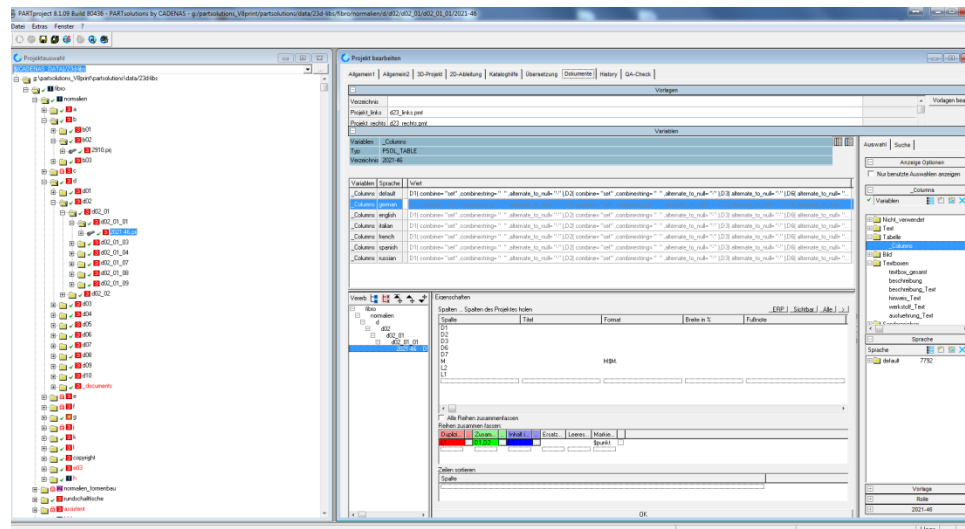
&



Creating the print catalog

Data maintenance in PART project

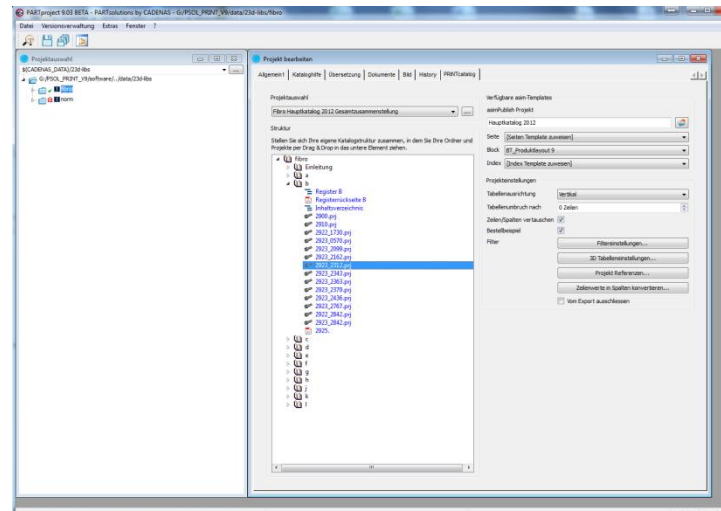
- All texts are entered in the database
- Dimensional drawings, previews etc. are linked to the products
- Tabular values are adjusted
- Multilingualism



Creating the print catalog

Creating the catalog structure

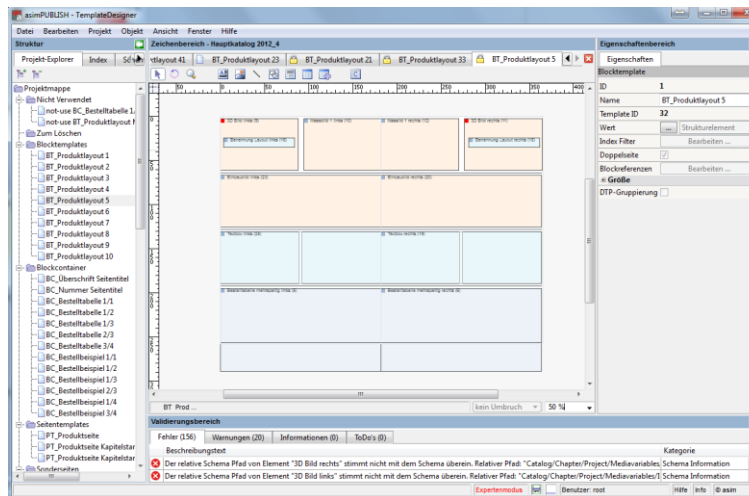
- Different catalog structures or catalogs can be generated
- Allocating dynamically generated pages as well as integrated pages
- Values can be changed
- Export can be done in diff. languages
- Sections can also be exported



Creating the print catalog

Creating the necessary templates

- Reducing content templates to a max. of about 30 planned units
- Additional templates for index, register, table of contents, to generate them automatically
- Creation effort of only a few days
- A strategy has to be considered beforehand, how the catalog can be structured in a reasonable way





Creating the print catalog

Table of contents

- A wide variety of indexes can be generated
- Different indexes can be used in a document

Inhalt alphabetisch

| | |
|--|-----|
| Aluminiumplatte ähnlich ISO 6753-1 | B12 |
| Aufschlagstück | F60 |
| Auswerferbolzen | L73 |
| Bolzenführung | L75 |
| Datumstempel, komplett (Standardausführung), Beschriftung vertieft | L76 |
| Deckleiste VDI 3357, Bronze mit Festschmierstoff | D40 |
| Deckleiste, Bronze mit Festschmierstoff | D41 |
| Distanzplatte gezahnt mit Abstimmplatte | D46 |
| Einsetzen-Prismen-Gleitstück, Stahl | D43 |
| Einspannzapfen, glatt | C17 |
| Einweiser | D47 |
| FIBROELAST®-Rundfeder 70 Shore A | F57 |
| FIBROFLEX-Platte | G63 |
| Führungsbuchse glatt Sinter ISO 9448-2 | D39 |
| Führungseinheit mit Bund MILLION GUIDE | D36 |
| Führungslager mit Festschmierstoff | D38 |
| Führungssäule - DIN 9825 / ISO 9182-2 mit Innengewinde | D38 |
| beidseitig | D29 |
| Führungssäule DIN 9825/ISO 9182-2 | D28 |
| Führungssäule mit Bund | D34 |
| Führungssäule mit Bund, nach WDX-Norm | D33 |
| Führungssäule mit Einführschräge und Einstich nach Daimler-Norm | D32 |
| Führungssäule mit Fiansch | L74 |
| Führungssäule zum Anschrauben, - DIN 9825 / ISO 9182-2 | D30 |
| Gasdruckfeder, Standard | F59 |
| Gleitstück VDI 3357, Bronze mit Festschmierstoff | D42 |
| Haltestück mit Schraube | D45 |
| Präzisionsflach- und -vierkantstahl nach DIN 59350, mit Bearbeitungsaufmaß | B13 |
| Ringbock mit Lagesicherung | C20 |
| Ringschraube, hochfest | C19 |
| Saulengestell DIN 9812 Form D/DG | A7 |
| Scheibe | F58 |
| Schneidstempel DIN 9861 Form DA | E51 |
| Schnellwechsel-Schneidstempel abgesetzt, mit Form, leicht belastbar | E53 |
| Schraube für T-Nut DIN 787 | C23 |
| Spanneisen, gabelförmig DIN 6315-B | C22 |
| Stahlplatte ISO 6753-1 | B11 |
| Tragbolzen mit Fallringsicherung nach CNOMO-Norm | C21 |
| Tragzapfen VDI 3366 | C18 |
| Wechsel-Führungssäule mit konischem Schaft DIN 9825 / ISO 9182-4 AFNOR® | D31 |
| Wechsel-Führungssäule mit Mittendubelfestigung | D35 |
| Zapfensenker für Schneidstempel mit Posaunenhalbs | E52 |
| Zentrierbolzen | D44 |

Inhalt numerisch

| | |
|-----------------|-----|
| 201.01. | A7 |
| 202.19. | D28 |
| 202.21. | D30 |
| 202.22. | D29 |
| 202.61. | D34 |
| 2020.62. | D35 |
| 2021.50. | D31 |
| 2022.12. | D32 |
| 2022.29. | D33 |
| 2024.94. | D36 |
| 2031.70. | D38 |
| 2051.32. | D39 |
| 2072.46 | D45 |
| 211.11. | C17 |
| 2130.11. | C18 |
| 2131.10. | C19 |
| 2131.22. | C20 |
| 2132.11. | C21 |
| 2140.17. | C22 |
| 2140.30. | C23 |
| 2212 | E53 |
| 222 | E51 |
| 2280.01. | L76 |
| 2284.00. | E52 |
| 244.10. | F58 |
| 2443.10. | D47 |
| 2444.12/2444.13 | D46 |
| 2445.10. | D44 |
| 2461.4. | F57 |
| 2480.004. | F60 |
| 2480.12.01500. | F59 |
| 251. | G63 |
| 2900. | B11 |
| 2910. | B12 |
| 2923.2343. | B13 |
| 2961.74. | D40 |
| 2961.78. | D41 |
| 2963.84. | D42 |
| 2965.83. | D43 |
| 2967.10. | L75 |
| 3111.31 | L74 |
| 3300.10. | L73 |





Creating the print cataloge




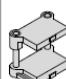
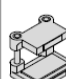


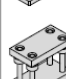
Register

- Create subdirectories by chapters
- Combination with images is possible

| | |
|--|---|
| A Säulenführungsgestelle | <small>Guss, Stahl und Aluminium Säulengestell-Kleinpressen, Werkzeugaufbauten, Schnellwechsellager</small> |
| B Geschliffene Platten und Leisten | <small>Platten aus Stahl und Aluminium Präzisionsfach- und -vierkantstähle</small> |
| C Transport- und Befestigungselemente | <small>Zapfen, Tragzapfen und -hälften, Kingschrauben, Pratzen, Schrauben</small> |
| D Führungselemente | <small>Säulen, Buchsen, Säulenblöcke, Kugelförmige, Gleitelemente</small> |
| E Präzisionsteile | <small>Schneidstempel und -buchsen, Schnellwechsel-Schneidelemente Stifte, Profilstifte</small> |
| F Federn | <small>Schrauben-, Gasdruck- und Elastomer-Druckfedern, Feder- und Distanzeinheiten</small> |
| G Elastomere | <small>FIBROFLEX und FIBROELAST-Platten und -Profile</small> |
| H FIBROCHEMIE | <small>Gießharze, Metallkleber</small> |
| J Peripherie | <small>um Presse und Werkzeugbau Foderbänder, Einbauhilfen</small> |
| K Schieber | <small>Geber-Nehmer-System, Kettenschieber, Rollenschieber</small> |
| L Normalien für den Formenbau | |

1

Inhaltsverzeichnis

| | | | | |
|---|------|---|---|--------------|
| S-A1 Säulengestelle: Hinweise und Richtlinien | A13 |  | 201.21. Säulengestell DIN 9819 Form D/DG | A116 |
| S-A2 Beschreibung Führungen | A17 |  | 201.23. Säulengestell | A117 |
| 201.01. Säulengestell, DIN 9812 Form D/DG | A110 |  | 201.26. Säulengestell | A118 |
| 201.03. Säulengestell DIN 9814 Form D/DG | A111 |  | 201.31. Säulengestell DIN 9822 Form C | A119 |
| 201.05. Säulengestell DIN 9816 Form D | A112 |  | 201.33. Säulengestell | A120 |
| 201.07. Säulengestell - DIN 9816 Form D | A113 |  | 201.36. Säulengestell | A121 |
| 201.11. Säulengestell DIN 9812 Form C/CG | A114 |  | 201.39. Feinschneid-Säulengestell | A122 |
| 201.13. Säulengestell DIN 9814 Form C/CG | A115 |  | 2010. Stahl-Säulengestell, Alu- Säulengestell | A124- 131 |

A4

Änderungen vorbehalten





Creating the print catalog

Generate complex tables

- All kinds of different tables can be generated
- Lines and columns can be summarized
- Possible to replace by special characters

2923.2343. Präzisionsflach- und -vierkantstahl nach DIN 59350, mit Bearbeitungsaufmaß

| b | 10.3 | 10.4 | 12.4 | 15.3 | 15.4 | 20.3 | 20.4 | 25.3 | 25.4 | 30.3 | 30.4 | 32.3 | 32.4 | 40.3 | 40.4 | 50.3 | 50.4 | 60.3 | 60.4 | 63.3 | 80.3 | 80.4 | 100.3 | 100.4 | 125.3 | 150.3 | 200.3 | | | | |
|-------|------|------|------|------|------|------|------|------|------|------|------|------|------|------|------|------|------|------|------|------|------|------|-------|-------|-------|-------|-------|---|---|---|---|
| s | 4.2 | ○ | | ○ | | ○ | | ○ | | ○ | | ○ | | ○ | | ○ | | ○ | | ○ | | ○ | | ○ | | ○ | | ○ | | | |
| 5.2 | ○ | | ○ | | ○ | | ○ | | ○ | | ○ | | ○ | | ○ | | ○ | | ○ | | ○ | | ○ | | ○ | | ○ | | ○ | | |
| 6.2 | ○ | | ○ | | ○ | | ○ | | ○ | | ○ | | ○ | | ○ | | ○ | | ○ | | ○ | | ○ | | ○ | | ○ | | ○ | | |
| 8.2 | ○ | | ○ | | ○ | | ○ | | ○ | | ○ | | ○ | | ○ | | ○ | | ○ | | ○ | | ○ | | ○ | | ○ | | ○ | | |
| 10.4 | | ○ | | | ○ | | ○ | | ○ | | ○ | | ○ | | ○ | | ○ | | ○ | | ○ | | ○ | | ○ | | ○ | | ○ | | |
| 12.4 | | | ○ | | ○ | | ○ | | ○ | | ○ | | ○ | | ○ | | ○ | | ○ | | ○ | | ○ | | ○ | | ○ | | ○ | | |
| 15.4 | | | | ○ | | ○ | | ○ | | ○ | | ○ | | ○ | | ○ | | ○ | | ○ | | ○ | | ○ | | ○ | | ○ | | ○ | |
| 16.4 | | | | | ○ | | ○ | | ○ | | ○ | | ○ | | ○ | | ○ | | ○ | | ○ | | ○ | | ○ | | ○ | | ○ | | |
| 20.4 | | | | | | ○ | | ○ | | ○ | | ○ | | ○ | | ○ | | ○ | | ○ | | ○ | | ○ | | ○ | | ○ | | ○ | |
| 25.4 | | | | | | | ○ | | ○ | | ○ | | ○ | | ○ | | ○ | | ○ | | ○ | | ○ | | ○ | | ○ | | ○ | | |
| 30.4 | | | | | | | | ○ | | ○ | | ○ | | ○ | | ○ | | ○ | | ○ | | ○ | | ○ | | ○ | | ○ | | ○ | |
| 32.4 | | | | | | | | | ○ | | ○ | | ○ | | ○ | | ○ | | ○ | | ○ | | ○ | | ○ | | ○ | | ○ | | ○ |
| 40.4 | | | | | | | | | | ○ | | ○ | | ○ | | ○ | | ○ | | ○ | | ○ | | ○ | | ○ | | ○ | | ○ | |
| 50.4 | | | | | | | | | | | ○ | | ○ | | ○ | | ○ | | ○ | | ○ | | ○ | | ○ | | ○ | | ○ | | ○ |
| 60.4 | | | | | | | | | | | | ○ | | ○ | | ○ | | ○ | | ○ | | ○ | | ○ | | ○ | | ○ | | ○ | |
| 80.4 | | | | | | | | | | | | | ○ | | ○ | | ○ | | ○ | | ○ | | ○ | | ○ | | ○ | | ○ | | ○ |
| 100.4 | | | | | | | | | | | | | | ○ | | ○ | | ○ | | ○ | | ○ | | ○ | | ○ | | ○ | | ○ | |

2022.29. Führungssäule mit Bund, nach WDX-Norm

| d _h | 25 | 32 | 40 | 50 | 63 | 80 | 100 |
|----------------|----|----|----|----|-----|-----|-----|
| d _e | 25 | 32 | 40 | 50 | 63 | 80 | 100 |
| d _s | 32 | 40 | 50 | 60 | 80 | 90 | 110 |
| d _e | 68 | 75 | 83 | 93 | 106 | 123 | 143 |
| l ₁ | 40 | 42 | 56 | 70 | 80 | 100 | 125 |
| l ₂ | 6 | 8 | 8 | 10 | 10 | 10 | 10 |
| h | | | | | | | |
| 125 | • | | | | | | |
| 140 | | • | | | | | |
| 160 | • | | | | | | |
| 180 | • | | | | | | |
| 200 | • | | | | | | |
| 224 | • | | | | | | |
| 250 | | • | | | | | |
| 280 | | | • | | | | |
| 315 | | | | • | | | |
| 355 | | | | | • | | |
| 400 | | | | | | • | |
| 500 | | | | | | | • |

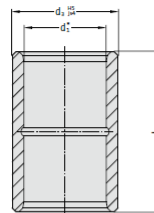
| Bestellnummer | b | h | (h ₁) | h ₂ | l | e | e ₁ | d | d _s | t | Anzahl Schrauben |
|----------------------|-----|----|-------------------|----------------|-----|-----|----------------|----|----------------|----|------------------|
| 2963.84.065.044.0150 | 65 | 44 | (47) | 65 | 150 | 45 | 100 | 20 | 13.5 | 20 | 2 |
| 2963.84.065.044.0200 | 65 | 44 | (47) | 65 | 200 | 95 | 150 | 20 | 13.5 | 20 | 2 |
| 2963.84.065.044.0250 | 65 | 44 | (47) | 65 | 250 | 145 | 100 | 20 | 13.5 | 20 | 3 |
| 2963.84.065.044.0300 | 65 | 44 | (47) | 65 | 300 | 195 | 125 | 20 | 13.5 | 20 | 3 |
| 2963.84.125.047.0150 | 125 | 47 | (52) | 85 | 150 | 45 | 100 | 26 | 17.5 | 15 | 2 |
| 2963.84.125.047.0200 | 125 | 47 | (52) | 85 | 200 | 95 | 150 | 26 | 17.5 | 15 | 2 |
| 2963.84.125.047.0250 | 125 | 47 | (52) | 85 | 250 | 145 | 100 | 26 | 17.5 | 15 | 3 |
| 2963.84.125.047.0300 | 125 | 47 | (52) | 85 | 300 | 195 | 125 | 26 | 17.5 | 15 | 3 |
| 2963.84.125.052.0150 | 125 | 52 | (57) | 85 | 150 | 45 | 100 | 26 | 17.5 | 15 | 2 |
| 2963.84.125.052.0200 | 125 | 52 | (57) | 85 | 200 | 95 | 150 | 26 | 17.5 | 15 | 2 |
| 2963.84.125.052.0250 | 125 | 52 | (57) | 85 | 250 | 145 | 100 | 26 | 17.5 | 15 | 3 |
| 2963.84.125.052.0300 | 125 | 52 | (57) | 85 | 300 | 195 | 125 | 26 | 17.5 | 15 | 3 |



Führungsbuchse glatt Sinter ISO 9448-2

FIBR

2051.32.



Werkstoff:
Sinterisen hoher Reinheit, carbontriert

Ausführung:
Laufflächen und Aufnahme Durchmesser feingeschliffen.

Passkleben:
Die Positionsgenauigkeit der Buchse wird durch Schiebepassbohrung H5 erreicht. Der Passkleber (Best.-Nr. 281.648) dient ausschließlich zur Haltesicherung.

Vorteile des Passklebens:
- hohe Genauigkeit und Stabilität
- problemlose Austauschbarkeit

Wir empfehlen, die Passbuchse nicht einzupressen, da sich dadurch die Geometrie der Buchse unzulässig verändert.

Hinweis:
Beschreibung Gleit- und Kugelführung siehe am Anfang des Kapitels D.

Passende Führungssäulen siehe Auswahlmatrix am Anfang des Kapitels D.
Einbau-Richtlinien / Maßtabellen am Ende des Kapitels D.

Bestell-Beispiel:

| | |
|--|--------------------|
| Führungsbuchse glatt Sinter ISO 9448-2 | =2051.32 |
| Führungsdurchmesser d ₁ | 30 mm = 030 |
| Länge l | 30 mm = 030 |
| Klassifizierung TOL | g6/h9 min. |
| Bestellnummer | =2051.32.030.030.0 |

2051.32. Führungsbuchse glatt Sinter ISO 9448-2

| | | | | | | | | | | |
|----------------|------|-------|-------|-------|-------|-------|-------|-------|-------|-----|
| d ₁ | 8 | 11,12 | 15,16 | 19,20 | 24,25 | 30,32 | 38,40 | 48,50 | 60,63 | 80 |
| d ₂ | 13,7 | 17 | 21,8 | 27 | 34 | 42 | 52 | 64 | 80 | 100 |
| l | | | | | | | | | | |
| 15 | • | | | | | | | | | |
| 25 | | • | | | | | | | | |
| 30 | | | • | | | | | | | |
| 35 | | | | • | | | | | | |
| 40 | | | | | • | | | | | |
| 50 | | | | | | • | | | | |
| 75 | | | | | | | • | | | |
| 95 | | | | | | | | • | | |
| 110 | | | | | | | | | • | |
| 120 | | | | | | | | | | • |

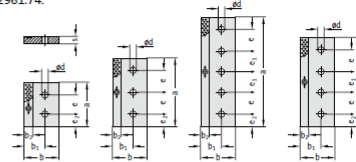
FIBRO

Deckleiste VDI 3357, Bronze mit Festschmierstoff

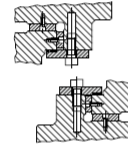


BT_Produktlayout 40

2961.74.



Einbaubeispiel



Werkstoff:
Bronze mit Festschmierstoff,
wartungsarm.

Hinweis:
Lieferung ohne Schrauben.

Befestigung:
Zylinderschrauben DIN EN ISO 4762
M10 X 30
M12 X 40
M16 X 50
M18 X 60
M20 X 70 verwenden.

2961.74. Deckleiste VDI 3357, Bronze mit Festschmierstoff

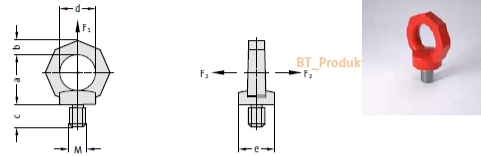
| Bestellnummer | Form | h | s | a | b ₁ | b ₂ | d | e | e ₁ | e ₂ | Anzahl der Bohrungen |
|--------------------|------|-----|----|-----|----------------|----------------|------|-----|----------------|----------------|----------------------|
| 2961 24.035.10.160 | A | 35 | 10 | 160 | 10 | 20 | 11 | 70 | - | 45 | 2 |
| 2961 24.035.10.200 | A | 35 | 10 | 200 | 10 | 20 | 11 | 110 | - | 45 | 2 |
| 2961 24.035.10.250 | B | 35 | 10 | 250 | 10 | 20 | 11 | 80 | - | 45 | 3 |
| 2961 24.035.15.160 | A | 45 | 15 | 160 | 15 | 30 | 13.5 | 70 | - | 45 | 2 |
| 2961 24.035.15.200 | A | 45 | 15 | 200 | 15 | 30 | 13.5 | 110 | - | 45 | 2 |
| 2961 24.035.15.250 | B | 45 | 15 | 250 | 15 | 30 | 13.5 | 80 | - | 45 | 3 |
| 2961 24.035.15.160 | A | 55 | 15 | 160 | 20 | 35 | 17.5 | 70 | - | 45 | 2 |
| 2961 24.035.15.200 | A | 55 | 15 | 200 | 20 | 35 | 17.5 | 110 | - | 45 | 2 |
| 2961 24.035.15.250 | B | 55 | 15 | 250 | 20 | 35 | 17.5 | 80 | - | 45 | 3 |
| 2961 24.035.25.200 | A | 75 | 25 | 200 | 40 | 75 | 17.5 | 110 | - | 45 | 2 |
| 2961 24.035.25.250 | B | 75 | 25 | 250 | 40 | 75 | 17.5 | 80 | - | 45 | 3 |
| 2961 24.035.25.240 | B | 85 | 28 | 240 | 30 | 60 | 22 | 95 | - | 25 | 3 |
| 2961 24.035.28.300 | D | 85 | 28 | 300 | 30 | 60 | 22 | 85 | 80 | 25 | 4 |
| 2961 24.035.28.350 | D | 85 | 28 | 350 | 30 | 60 | 22 | 100 | 100 | 25 | 4 |
| 2961 24.035.28.400 | D | 85 | 28 | 400 | 30 | 60 | 22 | 115 | 120 | 25 | 4 |
| 2961 24.035.28.450 | D | 85 | 28 | 450 | 30 | 60 | 22 | 130 | 130 | 25 | 4 |
| 2961 24.035.30.160 | A | 85 | 30 | 160 | 30 | 60 | 22 | 70 | - | 45 | 2 |
| 2961 24.035.30.200 | A | 85 | 30 | 200 | 30 | 60 | 22 | 110 | - | 45 | 2 |
| 2961 24.035.30.250 | B | 85 | 30 | 250 | 30 | 60 | 22 | 80 | - | 45 | 3 |
| 2961 24.035.30.300 | B | 85 | 30 | 300 | 30 | 60 | 22 | 105 | - | 45 | 3 |
| 2961 24.035.30.350 | B | 85 | 30 | 350 | 30 | 60 | 22 | 130 | - | 45 | 3 |
| 2961 24.035.30.400 | C | 85 | 30 | 400 | 30 | 60 | 22 | 80 | 75 | 45 | 5 |
| 2961 24.000.25.160 | A | 100 | 25 | 160 | 30 | 60 | 17.5 | 70 | - | 45 | 2 |
| 2961 24.000.25.200 | A | 100 | 25 | 200 | 30 | 60 | 17.5 | 110 | - | 45 | 2 |
| 2961 24.000.25.250 | B | 100 | 25 | 250 | 30 | 60 | 17.5 | 80 | - | 45 | 3 |
| 2961 24.000.25.400 | C | 100 | 25 | 400 | 30 | 60 | 17.5 | 80 | 75 | 45 | 5 |
| 2961 24.000.30.160 | A | 100 | 30 | 160 | 30 | 60 | 22 | 70 | - | 45 | 2 |
| 2961 24.000.30.200 | A | 100 | 30 | 200 | 30 | 60 | 22 | 110 | - | 45 | 2 |
| 2961 24.000.30.250 | B | 100 | 30 | 250 | 30 | 60 | 22 | 80 | - | 45 | 3 |
| 2961 24.000.30.400 | C | 100 | 30 | 400 | 30 | 60 | 22 | 80 | 75 | 45 | 5 |
| 2961 24.125.25.160 | A | 125 | 25 | 160 | 30 | 75 | 17.5 | 70 | - | 45 | 2 |
| 2961 24.125.25.200 | A | 125 | 25 | 200 | 30 | 75 | 17.5 | 110 | - | 45 | 2 |
| 2961 24.125.25.250 | B | 125 | 25 | 250 | 30 | 75 | 17.5 | 80 | - | 45 | 3 |
| 2961 24.125.25.300 | D | 125 | 25 | 300 | 30 | 85 | 25 | 80 | 80 | 25 | 4 |
| 2961 24.125.25.350 | D | 125 | 25 | 350 | 30 | 80 | 26 | 100 | 100 | 25 | 4 |
| 2961 24.125.25.400 | D | 125 | 25 | 400 | 30 | 85 | 26 | 115 | 120 | 25 | 4 |
| 2961 24.125.25.400 | C | 125 | 25 | 400 | 30 | 75 | 17.5 | 80 | 75 | 45 | 5 |
| 2961 24.125.25.450 | C | 125 | 25 | 450 | 30 | 80 | 26 | 100 | 100 | 25 | 5 |
| 2961 24.125.25.500 | C | 125 | 25 | 500 | 30 | 85 | 26 | 115 | 120 | 25 | 5 |
| 2961 24.125.30.160 | A | 125 | 30 | 160 | 30 | 75 | 22 | 70 | - | 45 | 2 |
| 2961 24.125.30.200 | A | 125 | 30 | 200 | 30 | 75 | 22 | 110 | - | 45 | 2 |
| 2961 24.125.30.250 | B | 125 | 30 | 250 | 30 | 75 | 22 | 80 | - | 45 | 3 |
| 2961 24.125.30.300 | B | 125 | 30 | 300 | 30 | 75 | 22 | 105 | - | 45 | 3 |
| 2961 24.125.30.350 | B | 125 | 30 | 350 | 30 | 75 | 22 | 130 | - | 45 | 3 |
| 2961 24.125.30.400 | C | 125 | 30 | 400 | 30 | 75 | 22 | 80 | 75 | 45 | 5 |
| 2961 24.125.30.450 | C | 125 | 30 | 450 | 30 | 75 | 22 | 80 | 95 | 50 | 5 |
| 2961 24.125.30.500 | C | 125 | 30 | 500 | 30 | 75 | 22 | 80 | 120 | 50 | 5 |



FIBRO

Ringschraube, hochfest

2131.10.



Beschreibung:

Beim Einsatz auf festem Sitz der Ringschraube achter Drehbewegungen beim Transport müssen vermieden werden. Dreht sich nicht automatisch in Kraftrichtung ein.

Nicht für den Bergbau zugelassen.

Mindestschraublänge:

1 x M in Stahl (min. S137)

1,25 x M in Guss

1,25 x M in Guss

1,25 x M in Guss

1,25 x M in Guss

1,25 x M in Guss

1,25 x M in Guss

1,25 x M in Guss

1,25 x M in Guss

1,25 x M in Guss

1,25 x M in Guss

1,25 x M in Guss

1,25 x M in Guss

1,25 x M in Guss

1,25 x M in Guss

1,25 x M in Guss

1,25 x M in Guss

1,25 x M in Guss

1,25 x M in Guss

1,25 x M in Guss

1,25 x M in Guss

1,25 x M in Guss

1,25 x M in Guss

1,25 x M in Guss

1,25 x M in Guss

1,25 x M in Guss

1,25 x M in Guss

1,25 x M in Guss

1,25 x M in Guss

1,25 x M in Guss

1,25 x M in Guss

1,25 x M in Guss

1,25 x M in Guss

1,25 x M in Guss

1,25 x M in Guss

1,25 x M in Guss

1,25 x M in Guss

1,25 x M in Guss

1,25 x M in Guss

1,25 x M in Guss

1,25 x M in Guss

1,25 x M in Guss

1,25 x M in Guss

1,25 x M in Guss

1,25 x M in Guss

1,25 x M in Guss

1,25 x M in Guss

2131.10. Ringschraube, hochfest

| Bestellnummer | a | b | c | d | M | e |
|---------------|-----|----|----|----|-----|-----|
| 2131.10.006 | 35 | 11 | 12 | 25 | M6 | 25 |
| 2131.10.008 | 35 | 11 | 12 | 25 | M8 | 25 |
| 2131.10.010 | 35 | 11 | 15 | 25 | M10 | 25 |
| 2131.10.014 | 48 | 15 | 18 | 30 | M14 | 30 |
| 2131.10.016 | 48 | 15 | 21 | 35 | M16 | 35 |
| 2131.10.016 | 48 | 15 | 24 | 35 | M16 | 35 |
| 2131.10.020 | 55 | 17 | 30 | 40 | M20 | 40 |
| 2131.10.024 | 70 | 21 | 36 | 50 | M24 | 50 |
| 2131.10.030 | 85 | 26 | 45 | 60 | M30 | 60 |
| 2131.10.036 | 130 | 43 | 63 | 90 | M36 | 100 |
| 2131.10.042 | 130 | 43 | 63 | 90 | M42 | 100 |
| 2131.10.048 | 130 | 43 | 67 | 90 | M48 | 100 |

Max. Transportgewicht „G“ in „t“ bei verschiedenen Anschlagarten

| Anschlagart | Neigungswinkel Belastungsrichtung | Transportgewicht in t (Tonnen) |
|-------------|-----------------------------------|--------------------------------|
| 2131.10.006 | 0° | 0,4 |
| 2131.10.008 | 0° | 0,8 |
| 2131.10.010 | 0° | 1,6 |
| 2131.10.012 | 0° | 2,4 |
| 2131.10.014 | 0° | 3,2 |
| 2131.10.016 | 0° | 4,0 |
| 2131.10.020 | 0° | 6,0 |
| 2131.10.024 | 0° | 8,0 |
| 2131.10.030 | 0° | 12,0 |
| 2131.10.036 | 0° | 18,0 |
| 2131.10.042 | 0° | 24,0 |
| 2131.10.048 | 0° | 32,0 |

Änderungen vorbehalten

C19



FIBRO

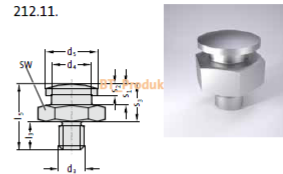
Kupplungszapfen mit Gewinde Kupplungszapfen mit Flansch

Aufnahmefutter für Kupplungszapfen Tragschraube VDI 3366

212.11. Kupplungszapfen mit Gewinde

| Bestellnummer | d ₁ | d ₂ | d ₃ | d ₄ | l ₁ | l ₂ | l ₃ | l ₄ | l ₅ | SW |
|---------------|----------------|----------------|----------------|----------------|----------------|----------------|----------------|----------------|----------------|----|
| 212.11.015 | M8x15 | 25 | 32 | 38 | 21 | 13 | 25 | 7 | 30 | 16 |
| 212.11.020 | M10x15 | 32 | 48 | 64 | 23 | 19 | 35 | 41 | 50 | 20 |
| 212.11.034 | M16x15 | 48 | 80 | 112 | 33 | 27 | 55 | 61 | 70 | 28 |
| 212.11.030 | M20x12 | 32 | 48 | 64 | 23 | 19 | 35 | 41 | 50 | 20 |

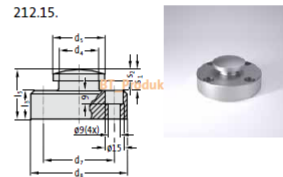
212.11.



212.15. Kupplungszapfen mit Flansch

| Bestellnummer | d ₁ | d ₂ | d ₃ | d ₄ | l ₁ | l ₂ | l ₃ | l ₄ | l ₅ | SW |
|---------------|----------------|----------------|----------------|----------------|----------------|----------------|----------------|----------------|----------------|----|
| 212.15.063 | 25 | 32 | 46 | 63 | 18 | 31 | 13 | 13 | 63 | 16 |
| 212.15.080 | 32 | 48 | 63 | 80 | 18 | 31 | 19 | 19 | 95 | 20 |
| 212.15.097 | 32 | 48 | 80 | 97 | 23 | 42 | 19 | 19 | 95 | 20 |
| 212.15.122 | 32 | 48 | 105 | 122 | 23 | 42 | 19 | 19 | 95 | 20 |

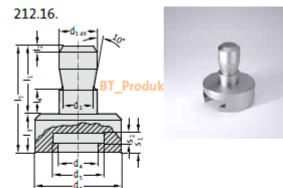
212.15.



212.16. Aufnahmefutter für Kupplungszapfen

| Bestellnummer | d ₁ | d ₂ | d ₃ | d ₄ | l ₁ | l ₂ | l ₃ | l ₄ | l ₅ | SW |
|---------------|----------------|----------------|----------------|----------------|----------------|----------------|----------------|----------------|----------------|----|
| 212.16.025 | 25 | 20 | 26 | 33 | 35 | 45 | 4 | 25 | 17,6 | 7 |
| 212.16.032 | 32 | 25 | 33 | 49 | 40 | 56 | 4 | 30 | 18,6 | 10 |
| 212.16.040 | 40 | 32 | 33 | 49 | 40 | 70 | 5 | 30 | 18,6 | 10 |

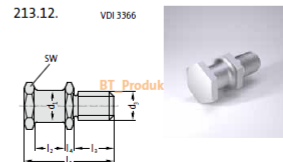
212.16.



213.12. Tragschraube VDI 3366

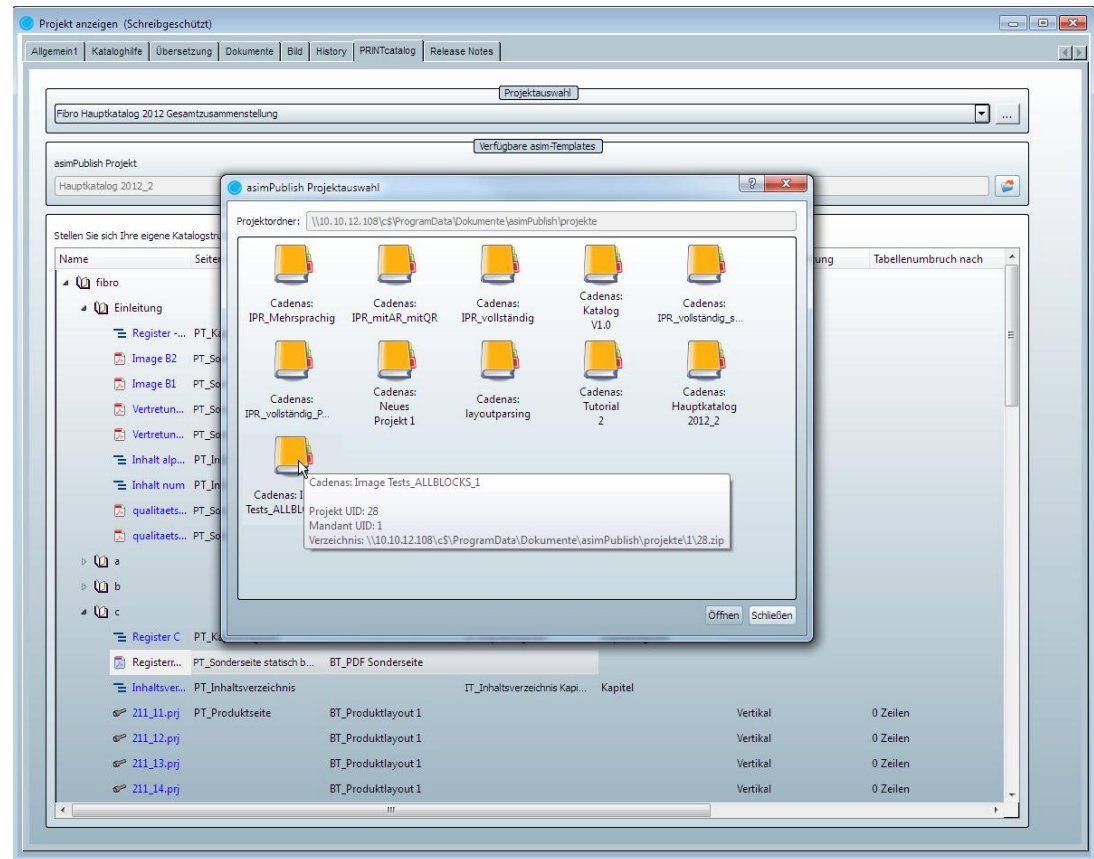
| Bestellnummer | d ₁ | d ₂ | l ₁ | l ₂ | l ₃ | SW | Traglast in kN |
|---------------|----------------|----------------|----------------|----------------|----------------|-----|----------------|
| 213.12.015 | 16 | M16 | 20 | 28 | 5 | 58 | 24 |
| 213.12.020 | 20 | M20 | 22 | 34 | 6 | 68 | 30 |
| 213.12.024 | 25 | M24 | 25 | 38 | 8 | 78 | 36 |
| 213.12.030 | 32 | M30 | 32 | 45 | 10 | 95 | 41 |
| 213.12.036 | 40 | M36 | 40 | 56 | 12 | 118 | 50 |

213.12.



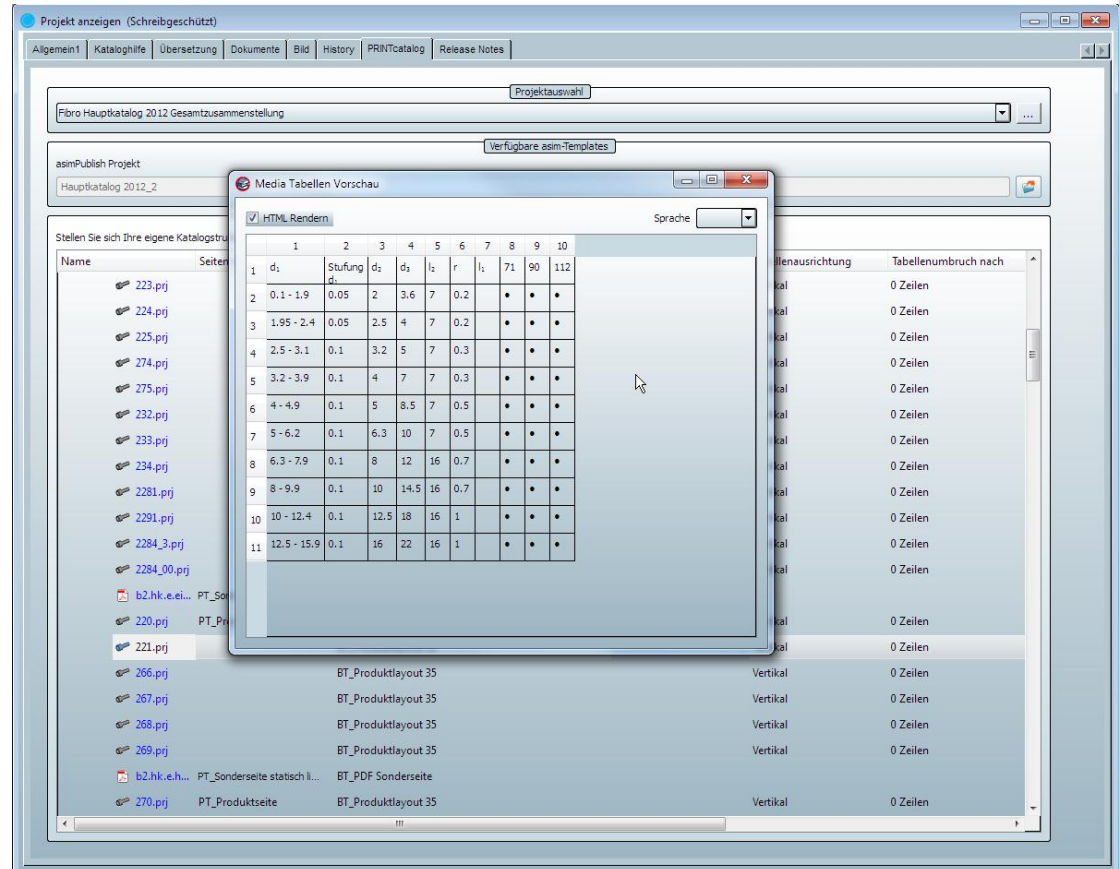
News in PARTproject

- Preselect and read templates directly in PARTproject
- Allocate templates
- Overwrite media data



News in PARTproject

- Tabular previews
- Tabular restriction
- Tabular settings like running direction, kind, etc.



Projekt anzeigen (Schreibgeschützt)

Algemeint | Kataloghilfe | Übersetzung | Dokumente | Bild | History | PRINTcatalog | Release Notes

Projektauswahl
Fibro Hauptkatalog 2012 Gesamtzusammenstellung

Verfügbare asim-Templates
asimPublish Projekt
Hauptkatalog 2012_2

Formular

Schnidstempel DIN 9844, Form B

| | DOC | * MAT | * D1 | P | * L1 | D2 | L2 | D3 | R | GEW | |
|----|----------------|-----------|--------------|---------------|------------|--------------|--------------|--------|--------|--------------|-------|
| | Katalogblatt | Werkstoff | Schneiddu... | Stufung [...] | Länge [mm] | Schaftdur... | Schneidla... | [mm] | [mm] | Gewicht [kg] | |
| 1 | 221.3.0010.071 | 221_pdf | HSS | 0.10 | 0.050 | 71 | 2.000 | 7.000 | 3.600 | 0.200 | 0.002 |
| 2 | 221.3.0195.071 | 221_pdf | HSS | 1.95 | 0.050 | 71 | 2.500 | 7.000 | 4.000 | 0.200 | 0.003 |
| 3 | 221.3.0250.071 | 221_pdf | HSS | 2.50 | 0.100 | 71 | 3.200 | 7.000 | 5.000 | 0.300 | 0.005 |
| 4 | 221.3.0320.071 | 221_pdf | HSS | 3.20 | 0.100 | 71 | 4.000 | 7.000 | 7.000 | 0.300 | 0.008 |
| 5 | 221.3.0400.071 | 221_pdf | HSS | 4.00 | 0.100 | 71 | 5.000 | 7.000 | 8.500 | 0.500 | 0.012 |
| 6 | 221.3.0500.071 | 221_pdf | HSS | 5.00 | 0.100 | 71 | 6.300 | 7.000 | 10.000 | 0.500 | 0.018 |
| 7 | 221.3.0630.071 | 221_pdf | HSS | 6.30 | 0.100 | 71 | 8.000 | 16.000 | 12.000 | 0.700 | 0.028 |
| 8 | 221.3.0800.071 | 221_pdf | HSS | 8.00 | 0.100 | 71 | 10.000 | 16.000 | 14.500 | 0.700 | 0.043 |
| 9 | 221.3.1000.071 | 221_pdf | HSS | 10.00 | 0.100 | 71 | 12.500 | 16.000 | 18.000 | 1.000 | 0.067 |
| 10 | 221.3.1250.071 | 221_pdf | HSS | 12.50 | 0.100 | 71 | 16.000 | 16.000 | 22.000 | 1.000 | 0.108 |

Zellenfilter

Geben Sie hier, Kommata separiert (,), die fixen Zeilennummern an die Sie anzeigen möchten. Alle anderen Zeilen werden ausgeblendet.
Beispiel: 10, 20, 40-70, 120

Übernehmen

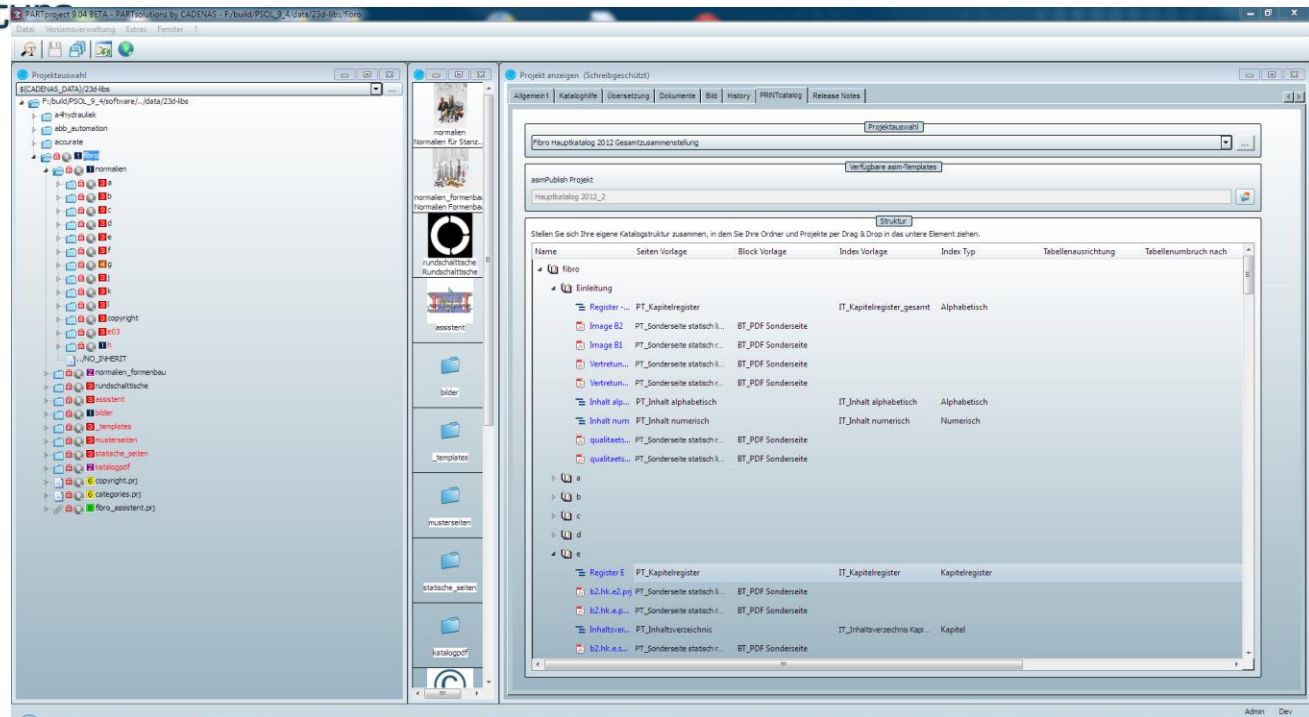
OK Abbrechen

Name

223...
224...
225...
224...
275...
232...
233...
224...
228...
228...
b2.h...
220.prj PT_Produltseite BT_Produltlayout 35 Vertikal 0 Zeilen
221.prj BT_Produltlayout 35 Vertikal 0 Zeilen
266.prj BT_Produltlayout 35 Vertikal 0 Zeilen
267.prj BT_Produltlayout 35 Vertikal 0 Zeilen
268.prj BT_Produltlayout 35 Vertikal 0 Zeilen
269.prj BT_Produltlayout 35 Vertikal 0 Zeilen
b2.hk.e.h... PT_Sonderseite statsch li... BT_PDF Sonderseite
270.prj PT_Produltseite BT_Produltlayout 35 Vertikal 0 Zeilen

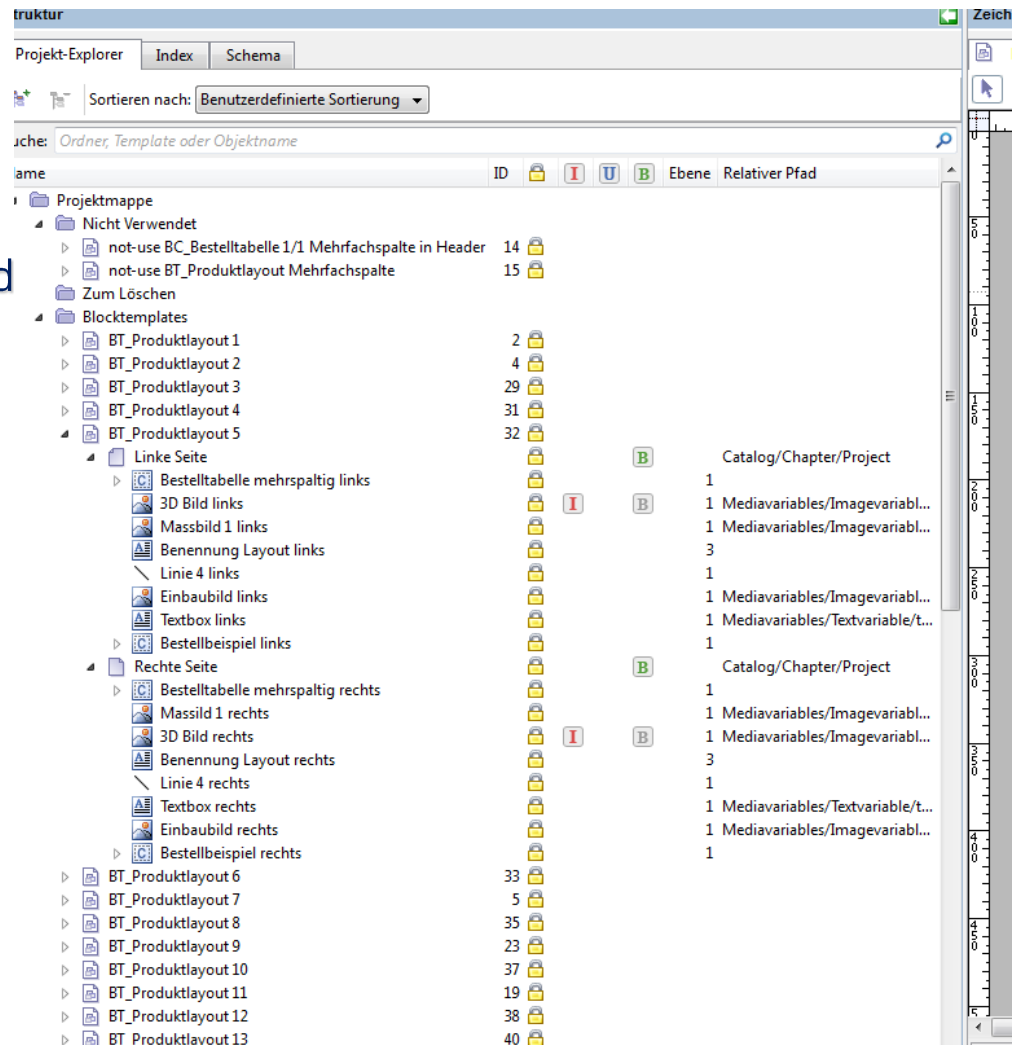
News in PARTproject

- Building up the structure via drag n drop
- Simple template allocation



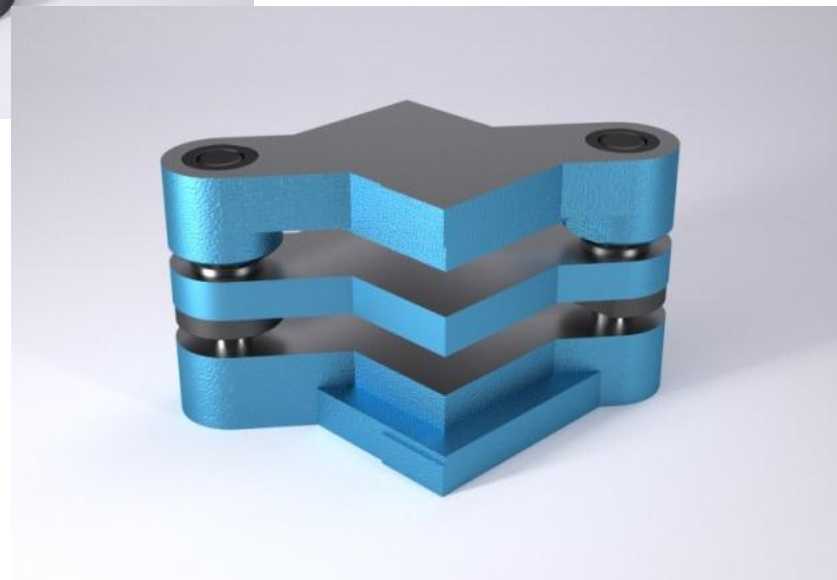
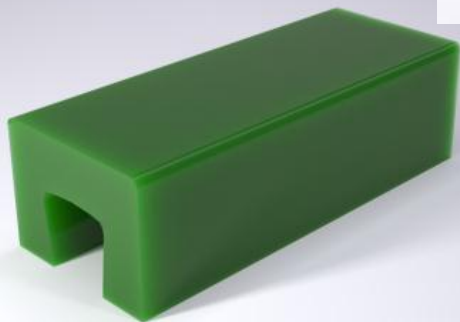
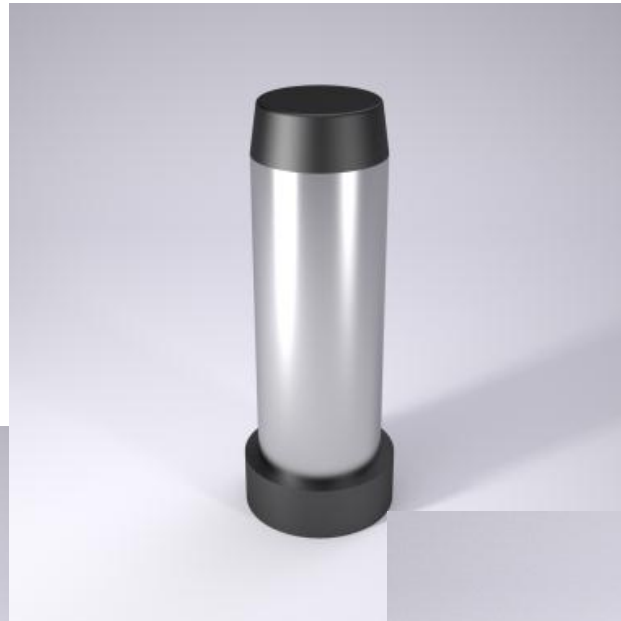
News about template designer

- ProjectExplorer clearly arranged
- Extensive overview of the elements used
- Simple adjustment of the templates
- Simple search





News





News

eCATALOG
SOLUTIONS

**ECATALOGSOLUTIONS –
WEIT MEHR ALS NUR
3D CAD MODELLE**

The print catalog becomes digital





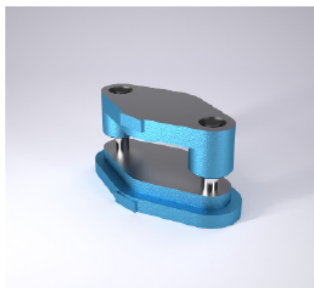
The print catalog becomes digital

Interactive PDF

- For Print, CD and Internet
- Additional functionalities
- Embedding QR Code
- Embedding deep links

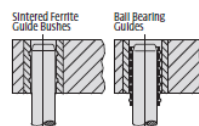
FIBRO

Die Sets DIN 9812 Type D/DG

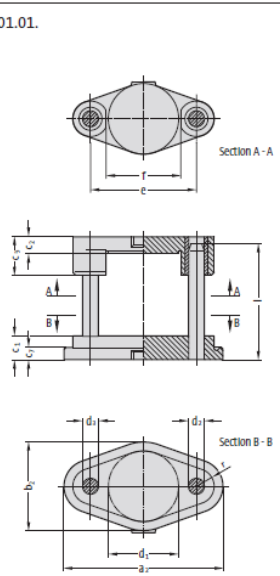
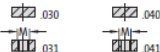


201.01.

Guide Elements



Order No (part II)
Available without or
with shank thread
in top bolster



201.01. Die Sets DIN 9812 Type D/DG

| Order No part I* | d ₁ | a ₂ | b ₂ | c ₂ | C ₂ | C ₃ | C ₄ | d ₂ | d ₃ | e | f | l | R | M |
|------------------|----------------|----------------|----------------|----------------|----------------|----------------|----------------|----------------|----------------|-----|-----|-----|----|--------|
| 201.01.063 | 63 | 182 | 100 | 40 | 25 | 60 | 20 | 16 | 15 | 106 | 73 | 140 | 20 | 16x1.5 |
| 201.01.080 | 80 | 236 | 120 | 50 | 30 | 80 | 30 | 20 | 19 | 140 | 90 | 160 | 28 | 20x1.5 |
| 201.01.100 | 100 | 275 | 140 | 50 | 30 | 80 | 30 | 25 | 24 | 165 | 110 | 160 | 35 | 20x1.5 |
| 201.01.125 | 125 | 300 | 165 | 50 | 30 | 80 | 30 | 25 | 24 | 190 | 139 | 160 | 35 | 20x1.5 |
| 201.01.160 | 160 | 360 | 200 | 56 | 40 | 90 | 30 | 32 | 30 | 240 | 174 | 180 | 40 | 24x1.5 |
| 201.01.180 | 180 | 380 | 220 | 56 | 40 | 90 | 30 | 32 | 30 | 260 | 194 | 180 | 40 | 24x1.5 |
| 201.01.200 | 200 | 400 | 240 | 56 | 40 | 90 | 30 | 32 | 30 | 280 | 218 | 180 | 40 | 24x1.5 |
| 201.01.250 | 250 | 496 | 300 | 56 | 50 | 100 | 30 | 40 | 38 | 350 | 268 | 200 | 48 | 30x2 |
| 201.01.315 | 315 | 563 | 365 | 63 | 50 | 100 | 30 | 40 | 38 | 417 | 333 | 224 | 48 | 30x2 |

*stusnote_Text.

Ordering Code

| | | |
|-----------------------------|------------------|------------------|
| Die Sets DIN 9812 Type D/DG | = | 201.01 |
| Work area D1 | 160 mm | = 160 |
| Guide Elements FA | sintered ferrite | = 03 |
| Shank thread ZG | without | = 0 |
| Order No. | | =>201.01.160.030 |

A4

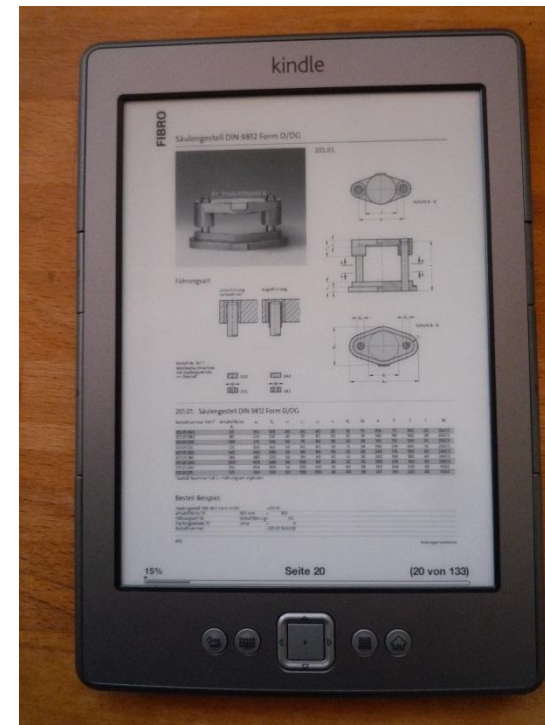
subject to alterations



The print catalog becomes digital

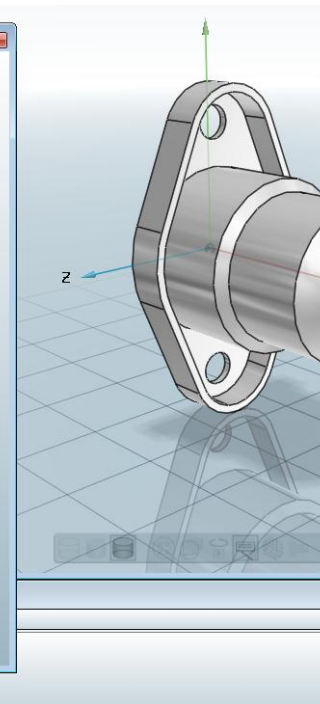
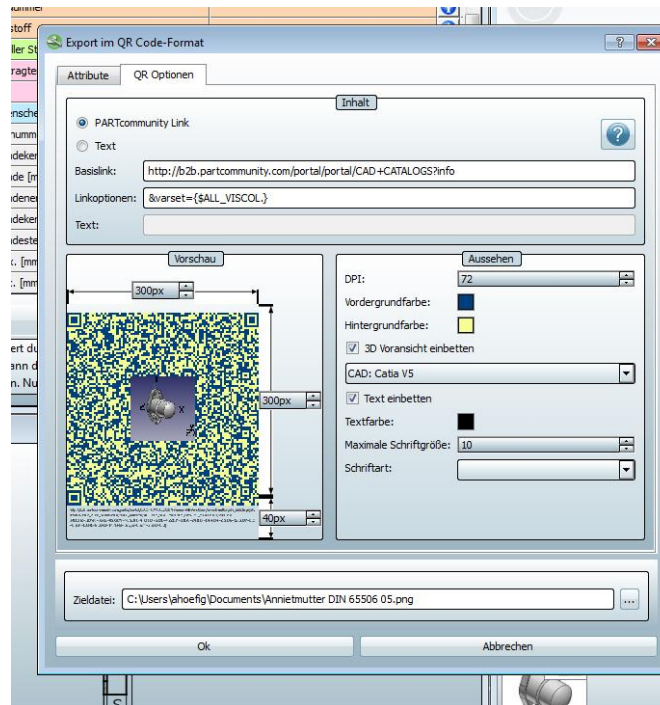
Using the data:

- Catalog can be printed or used as PDF
- Catalog can for example be used for iPad, kindle etc.
- Easily usable for sales and marketing as well



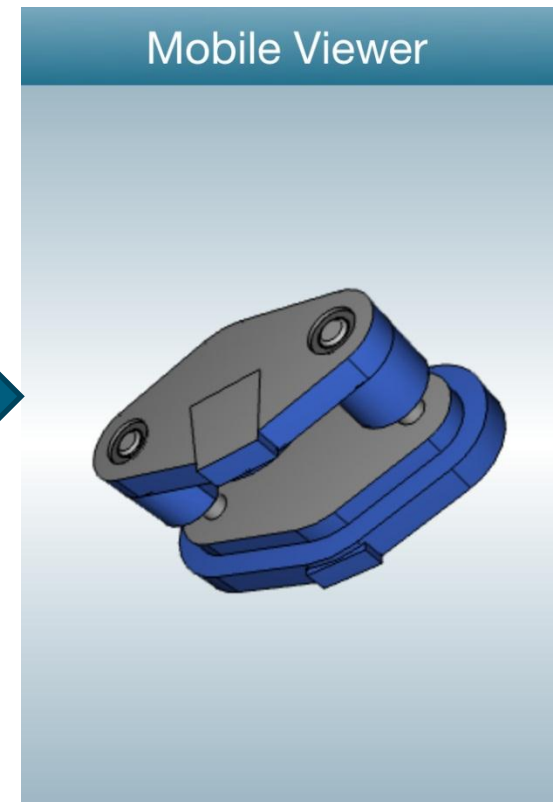
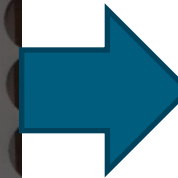
QR Code Generator

- QR Code saves link on 3D part
- QR Code can be directly generated from PARTproject
- Colors can be adapted to CD
- Images can be integrated
- QR Codes are also saved in Media DB



The print catalog becomes digital

- Code can be inserted in print catalog
- Is recognized with a QR Code Scanner
- Works with iOS, Android and others
- Directly opens the 3D part

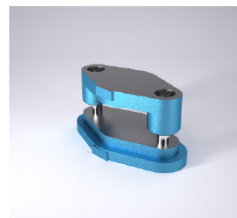


The print catalog becomes digital

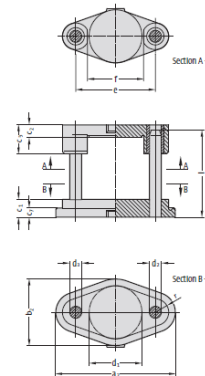
- Deep link is connected to any element in PDF
- Part is directly opened in PARTcommunity with a click

FIBRO

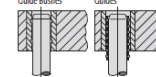
Die Sets DIN 9812 Type D/DG



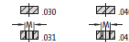
201.01.



Guide Elements



Order No (part ID) Available without or with shank thread in top booster



201.01. Die Sets DIN 9812 Type D/DG

| Order No part ID | d ₁ | d ₂ | d ₃ | d ₄ | d ₅ | d ₆ | d ₇ | d ₈ | e | f | l | R | M |
|------------------|----------------|----------------|----------------|----------------|----------------|----------------|----------------|----------------|-----|-----|-----|----|--------|
| 201 01 083 | 83 | 182 | 100 | 40 | 25 | 50 | 20 | 15 | 106 | 73 | 140 | 10 | 16x1.5 |
| 201 01 089 | 89 | 214 | 110 | 50 | 30 | 60 | 30 | 20 | 119 | 86 | 159 | 18 | 20x1.5 |
| 201 01 100 | 100 | 275 | 140 | 50 | 30 | 80 | 30 | 25 | 149 | 109 | 199 | 15 | 20x1.5 |
| 201 01 125 | 125 | 306 | 165 | 50 | 30 | 100 | 30 | 25 | 170 | 129 | 220 | 15 | 20x1.5 |
| 201 01 160 | 160 | 360 | 200 | 50 | 40 | 120 | 30 | 30 | 200 | 154 | 254 | 10 | 20x1.5 |
| 201 01 180 | 180 | 380 | 220 | 50 | 40 | 130 | 30 | 30 | 210 | 164 | 264 | 10 | 20x1.5 |
| 201 01 200 | 200 | 400 | 240 | 50 | 40 | 140 | 30 | 30 | 220 | 174 | 274 | 10 | 20x1.5 |
| 201 01 220 | 220 | 420 | 260 | 50 | 50 | 150 | 30 | 40 | 230 | 184 | 284 | 10 | 20x1.5 |
| 201 01 250 | 250 | 470 | 300 | 50 | 50 | 170 | 30 | 40 | 250 | 204 | 304 | 10 | 20x1.5 |
| 201 01 315 | 315 | 561 | 361 | 61 | 60 | 200 | 30 | 40 | 315 | 241 | 341 | 10 | 20x1.5 |

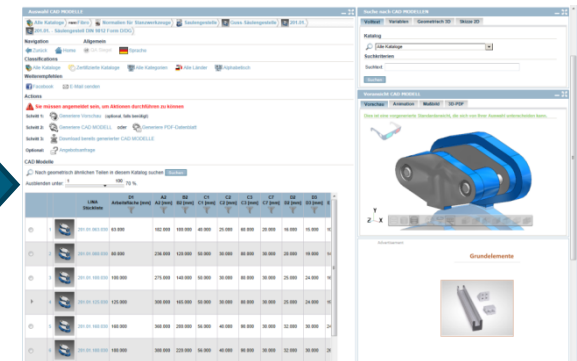
*stussnote_text

Ordering Code

| | |
|-----------------------------|------------------|
| Die Sets DIN 9812 Type D/DG | =201.01 |
| Werkstoff 01 | = 160 |
| Guide Elements FA | sintered ferrite |
| Shank thread FC | without |
| Order No. | =201.01.160.030 |

A4

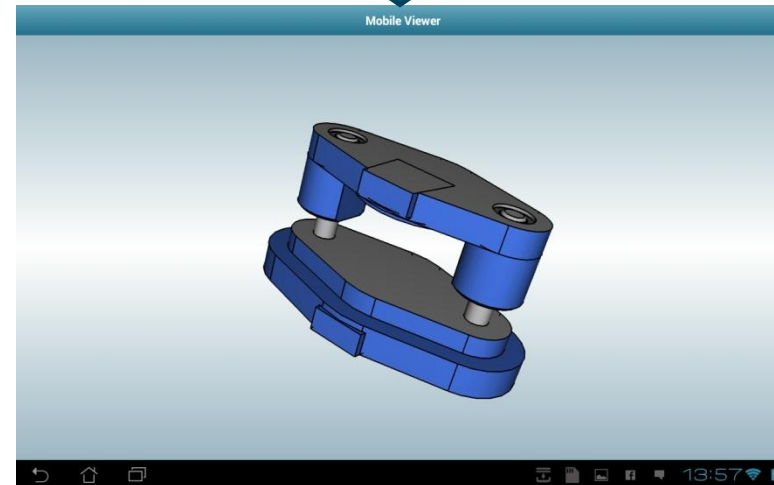
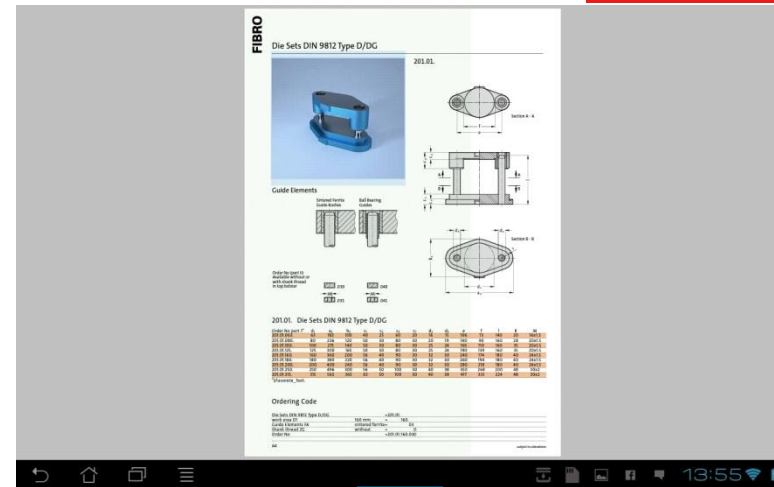
subject alterations





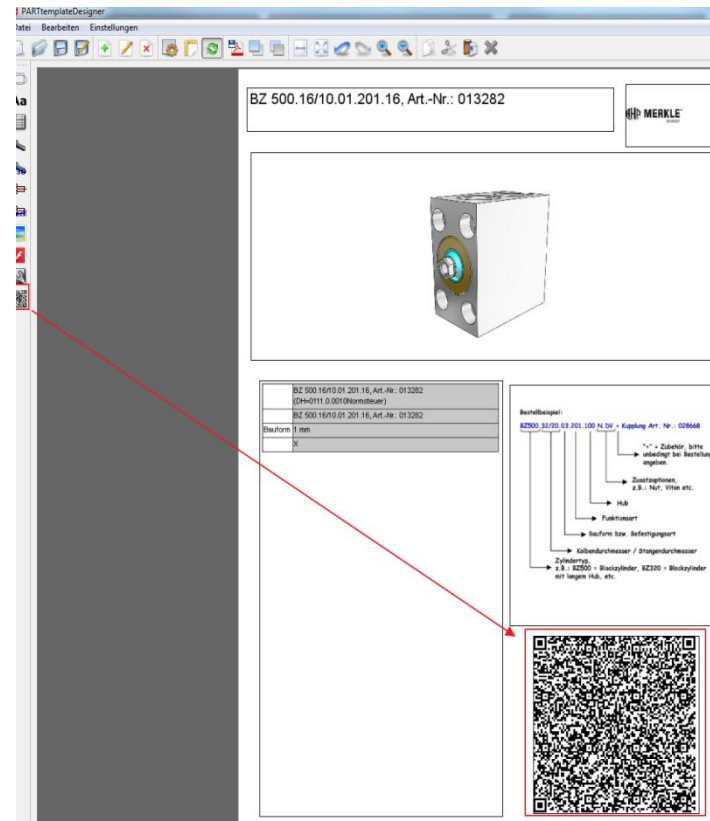
The print catalog becomes digital

- Deep links work with mobile devices as well
- User gets directly to the 3D part again



The print catalog becomes digital

- For mere data sheets in the 3D catalog there is the PDF Template Designer.
- Also graphically oriented
- Contains mainly the same functions
- PDF data sheets are generated in the web at runtime



Conclusion

- **The print catalog can be created from one data base**
- **Consistent use of data**
- **The Catalog is not only available in print, but via all current media channels**
- **The catalog is enriched with many other functions**
- **Communication between 3D and technical information in both directions**
- **Easily usable for customers but also for sales and marketing**





Questions ?

Feedback ?

Thank you very much for your attention

Dipl.-Ing. (FH) Andreas Höfig